

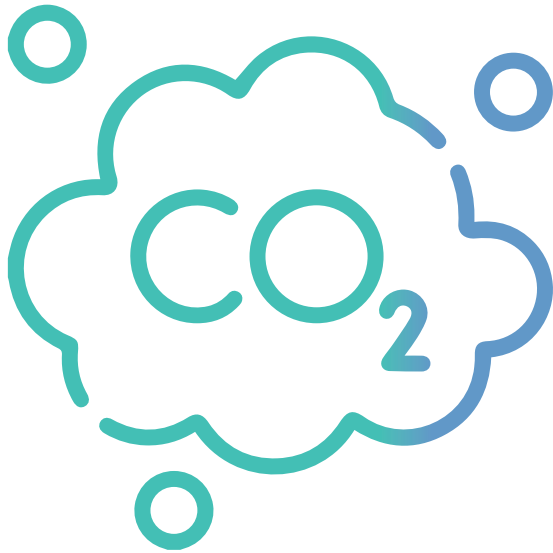
ARTIO



Transforming Supply Chain and
Investment Emissions Reporting

December 2022

The Challenge



Scope 3 (indirect emissions) comprise a significant corporate emissions impact through supply chain and equity investments. More and more companies are having to grapple with this, but are finding it difficult for several reasons:



Quantifying and reporting these Scope 3 emissions is a key element of corporate regulation and disclosure, supporting both investment requirements (TCFD, SFDR) and corporate reporting (SECR).



Corporate carbon reporting is still developing and the vast majority of SMEs have no measurement that can support that or their clients' disclosure.



Supply chain and investment portfolios can be extensive, and both can require considerable time and effort to accurately measure and quantify them - increasing costs and stretching resources.

The Solution

The accuracy and value of this solution far exceeds existing proxy data and the sectoral analysis/ranking tools available now.

- Rapid tool deployment
- Total regulatory compliance
- Accelerated issue surfacing/reduced corporate effort



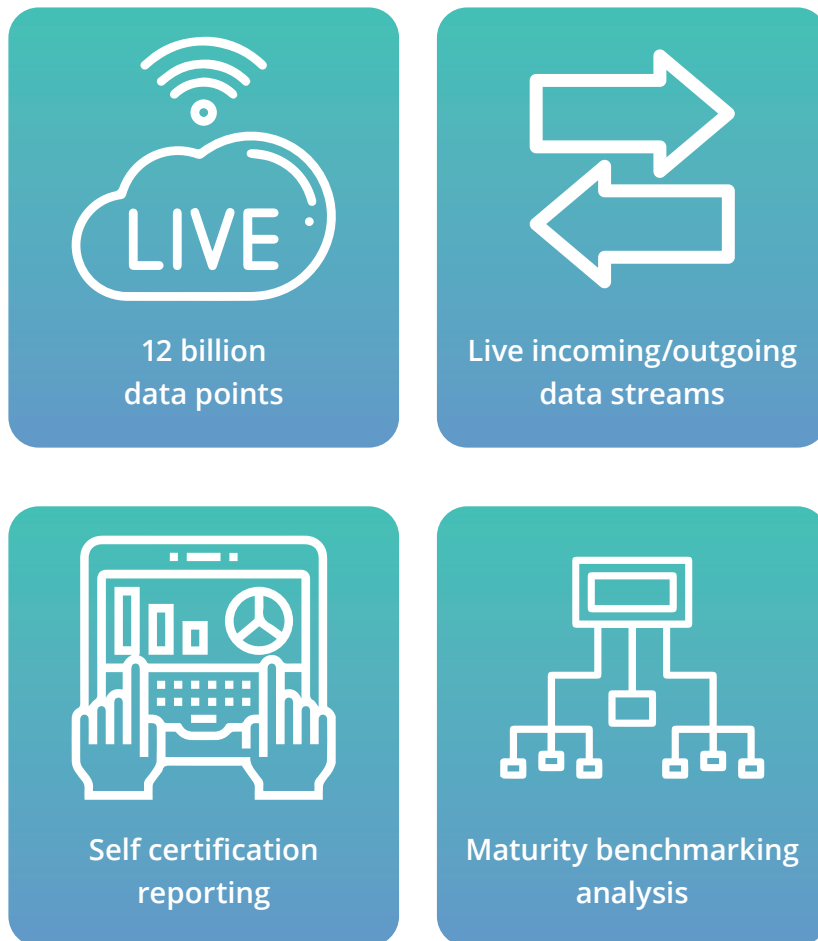
Carbon Responsible has over a decade of experience in the measurement and disclosure of Scope 3 emissions, using specialist data products.



mnAi have a huge depth of experience in information data solutions to support ESG measurement, using high quality data and third party verified algorithms.

How It Works

Bringing together these mnAi and Carbon Responsible tools delivers analysis of an entire supply chain or investment portfolio in as little as two months.



Clients only need to provide a list of suppliers/investments and key contact details - these will be loaded into the platform.

Contact and support for the process is managed externally to the client.

Application



Artio can be deployed in the United Kingdom and encompasses all large, small and micro scale enterprises.



There is no limit to the number of suppliers or equity investments (public & private) that can be included in a disclosure programme.



Complex operational emissions impacts for major construction projects, large supply chains and financed emissions can all be reported on rapidly.

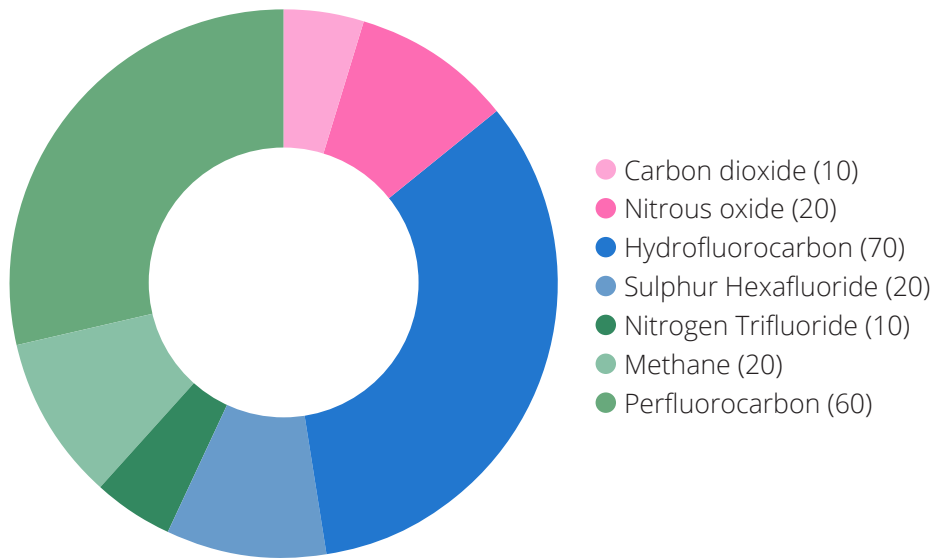


Impacts from corporate lending and investment in private and public companies can be ascertained equally efficiently and comprehensively.

Outputs

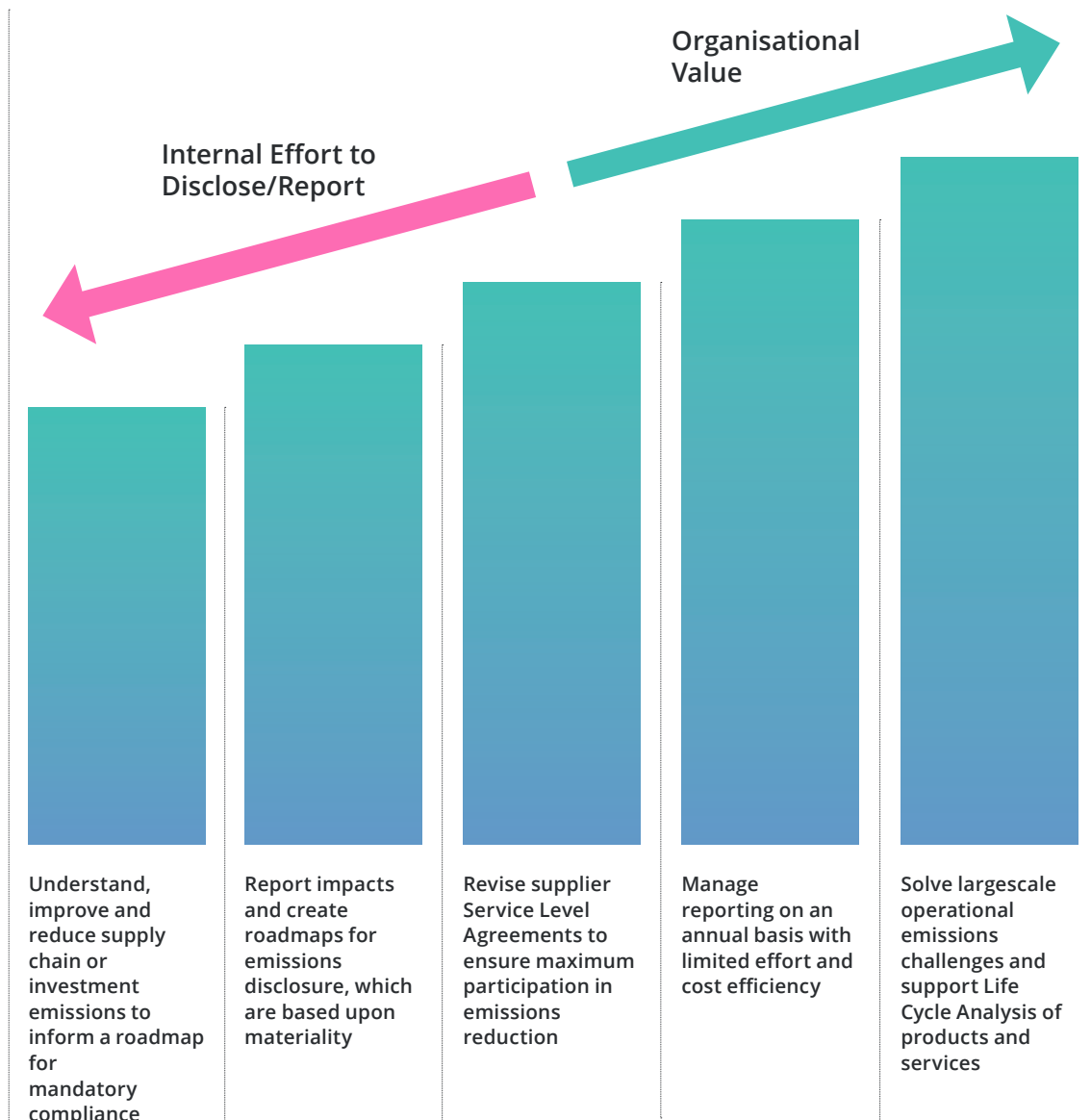
The key outputs enable a full assessment of supplier or investment impact, through:

- Emissions intensity per company (can include TopCos and subsidiaries if required)
- Carbon maturity benchmarking on KPIs - including motivation, measurement and targets
- Reported emissions from all entities for Scope 1 & 2 - including key emissions intensity metrics
- Analysis of all input data by sector type, revenue and emissions intensity
- Bespoke reporting and insights

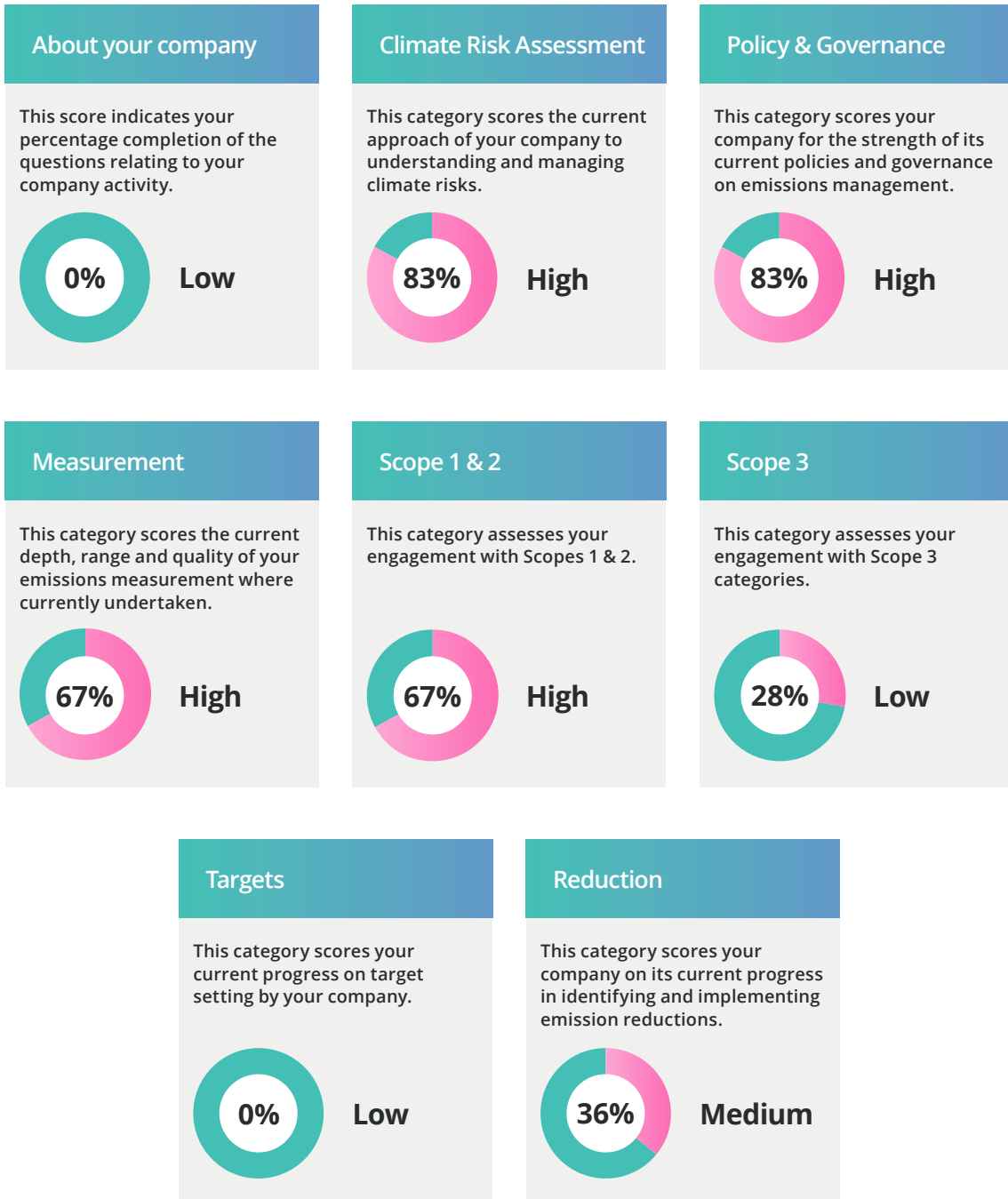


Emissions Type	Emissions Value
Carbon Dioxide (CO ₂)	Low emitter
Nitrous Oxide (N ₂ O)	Ultra-low emitter
Hydrofluorocarbon (HFC)	Medium emitter
Sulphur Hexafluoride (SF ₆)	Ultra-high emitter
Nitrogen Trifluoride (NF ₃)	High emitter
Methane (CF ₄)	Low emitter
Perfluorocarbon (PFC)	Medium-low emitter
Total	Medium emitter

Value



Benchmarking



Self-Certification - Entity Level

Self-certification has never been easier, or more accurate, than it is with Artio - here's an example of what we provide...

The Company Limited DATE ISSUED: 17/02/20 DATE EXPIRES: 02/20 - 23/02/20

Summary

Total emissions from all data entered:
13,823.123
(excluding taxable force)

Scope 1 emissions summary
Total CO2e: **1,083.123**
Scope 1 emissions are all the emissions that are derived from direct combustion of fuel, for example in company vehicles, plant and machinery. This includes use of gas or heating oil, for premises where relevant and leased as well as fully owned vehicles and plant.

Scope 2 emissions summary
Total CO2e: **1,474.123**
Scope 2 emissions are those derived from purchased heat, steam or electricity. Most commonly for companies this is primarily electricity. This does not include transmission and distribution emissions for electricity which are a Scope 3 value.

Scope 3 emissions summary
Total CO2e: **1,266.123**
Scope 3 emissions are all indirect emissions generated from the use of purchased services, such as business travel, freight and all emissions not specifically covered in Scope 1 and Scope 2 categories.

Total full time employees (FTE)
XXXXXXXXXX

Total annual revenue £ in 100,000's
XXXXXXXXXX

Carbon intensity: CO2e per FTE
XXXXXXXXXX

Carbon intensity: CO2e per £100,000 of revenue
XXXXXXXXXX

Details
This report is for the year ended 31st March 2020. It is based on the data provided to Carbon Responsible by The Company Limited. It is not intended to be used for regulatory purposes. All information is as reported by the Company. Scope 1 & 2 are based on the data provided to Carbon Responsible by The Company Limited. Scope 3 emissions are based on the data provided to Carbon Responsible by The Company Limited. For further support, information and resources on carbon emissions measurement and reporting: Carbon Responsible, 229 Chigwell Lane, Biggleswade, East Sussex, AB12 3QB. 01323 507899 info@carbonresponsible.com www.carbonresponsible.com

Energy Scope

- 23% Scope 1
- 77% Scope 2

Emissions Type

- 82% Electricity
- 18% Fuel Oil

carbon responsible www.carbonresponsible.com

The Company Limited DATE ISSUED: 17/02/20 DATE EXPIRES: 02/20 - 23/02/20

Detailed summary of emissions

Scope 1 - Energy
Gas, Oil and Fuel
Input: enter the number of petrol/gas/litres. When not available, then use the correct unit. This box is available.

Location	Type	Quantity	CO2e
London	Gas	121 Cubic Feet	322.123
	Oil	No input data available	
	Fuel	No input data available	
Brighton	Gas	60 Cubic Feet	544.123
	Oil	80 Litres	121.123
	Fuel	85 Litres	116.123
Total CO2e			1,083.123

Scope 2 - Energy
Electricity
This table is based on the data provided to Carbon Responsible by The Company Limited. This box is available.

Location	Quantity	CO2e
London	421 kWh	630.123
Brighton	212 kWh	844.123
Total CO2e		1,474.123

Scope 3 - Travel
Road, Rail, Air and Hotel
Input: enter the CO2e amount. When no CO2e is entered, the correct unit for this sector will show. This box is available.

Travel Method / Hotel	Distance / Quantity	CO2e
Car	121 Km	312.123
Van	63 Km	328.123
Motorbike	65 Km	81.123
Coach	88 Km	102.123
Bus	108 Km	401.123
Rail	No input data available	
Air	15,000.123 Km	5,000.123
Hotel	3 Nights	33.123
Total CO2e		10,000.123

For the total figure including road/rail/bus, please add: 4,000.123 CO2e

Congratulations on taking the first step towards addressing your Company's carbon emissions.
At Carbon Responsible we can assist you with a tailored, achievable process to achieve annual emissions reductions.

carbon responsible www.carbonresponsible.com

ARTIO



Beehive Ring Road, Gatwick Airport, West Sussex, RH6 0PA

0203 151 6624
sales@mnai.tech
www.mnai.tech

Andrew Inglis, Head of ESG
andrew.inglis@mnai.tech